


[adriennepapp](#) [alexkaufman](#) [atlanticpublicity](#) [atlanticpublisher](#) [cannes](#) [emmys](#)  
[jagger](#) [mick](#) [mickjagger](#) [spotlightnewsmedia](#) [spotlightpublication](#)

[atlanticpublicity](#)  Flickr Hive Mind [\(more\)](#) [Preferences](#) There are still problems with the Flickr API. Working on this... Nathan I order all my professional prints from Adorama Pix in NYC. I recommend them. I prefer METAL. -Nathan

[Favorites](#)

[Groups](#)

[Interestingness](#)

[Recent](#)

[Tags](#)

[Text](#)

[User](#)

[Advanced](#)

[Recent](#)

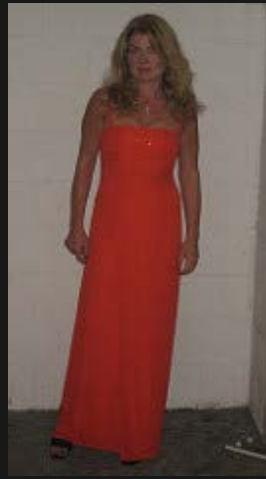
[Interesting](#)

[Timeline](#)

Welcome to Flickr Hive Mind. If you [log into Flickr](#) you will see your private photos and larger thumbnails. [Where do these thumbnails come from?](#)

[How are the photos licensed?](#)

























page:

1

2

3

size:

-

Hivemind: <http://flickrhivemind.net/Tags/atlanticpublicity> Hits: 102 Pages: 3

by mqid

**20 People Of Walmart Who Have No Shame**

**Pants-Less Model Walks Through Hong Kong Totally Unnoticed**

**15 Cosplays That'll Make You Feel Uncomfortably Aroused**

**Husband Divorced His Wife After Looking Closer At The Photo**

**Does This Scare You?**

**The 29 Unexplained**

**It Will Take You A While To Get**

**The 20 Strangest Phobias You**

**32 Photos Of Celebrity Open**

**19 Tinder Photos You Will Never,**

Horrors Ever  
Captured On  
Camera

What's In This  
Photo

Could Have!

Casket Funerals  
That Will Shock  
...  
Ever Forget

50 spotlightnewsmedia adriennepapp spotlightpublication atlanticpublicity  
atlanticpublisher 36 emmys 4 cannes alexkaufman mick mickjagger jagger

Pairs: 50 atlanticpublisher,spotlightpublication  
atlanticpublisher,spotlightnewsmedia adriennepapp,atlanticpublicity  
spotlightnewsmedia,spotlightpublication adriennepapp,spotlightnewsmedia  
atlanticpublicity,spotlightnewsmedia atlanticpublicity,atlanticpublisher  
atlanticpublicity,spotlightpublication adriennepapp,spotlightpublication  
adriennepapp,atlanticpublisher 36 atlanticpublicity,emmys

Users: atlanticpublicity 50

Example Queries:

- <http://flickrhivemind.net/Tags/nikon/Interesting> Interesting pictures tagged with 'nikon'.
- <http://flickrhivemind.net/User/nosha/Recent> Nosha's photos, sorted by date posted to Flickr.
- <http://flickrhivemind.net/User/nosha/250/75/Timeline> 250 thumbnails, size 75, user 'nosha', sorted by date photographed.
- <http://flickrhivemind.net/User/listentoreason> Photos by user 'listentoreason', with default photo number, size, and sorting options (can change).
- <http://flickrhivemind.net/explore> All 500 of yesterday's Explored Photos
- <http://flickrhivemind.net/Sets/72157607681964723> Display a Photo Set in Flickr Hive Mind
- <http://flickrhivemind.net/MyContacts> Better way to display more photos from your contacts - you must be logged in for this to work.

Flickr Hive Mind is a data mining tool for the Flickr database of photography. Flickr Hive Mind is a search

engine as well as an experiment in the power of [Folksonomies](#). All thumbnail images come directly from [Flickr](#), none are stored on [Flickr Hive Mind](#). These photos are bound by the copyright and license of their owners, the thumbnail links take you to the photos (as well as their copyright and license details) within [Flickr](#). Because some other search engines (Google, etc.) index parts of [Flickr Hive Mind](#), you may have been led here from one of them. Welcome to Flickr Hive Mind, almost certainly the best search engine for photography on the web. If you are a [Flickr](#) user and use [Flickr Stats](#) you may have seen people being led to your photos via [Flickr Hive Mind](#) (as a Referrer). Flickr requires that I inform you that Flickr Hive Mind uses the Flickr API, but is neither endorsed nor certified by them. There are literally hundreds of other web tools built around the Flickr API, see [Flickr Bits](#) for a bunch of examples. If you are unhappy with your photos' presence on this site, you can **(a)** make your photos private for yourself, friends, and family. These settings will be instantly honored by Flickr Hive Mind and all other API-driven applications. **(b)** Hide your photos globally from text and tag searches on 3rd party sites that use the Flickr API, via your preference settings on Flickr. See the privacy tab at: <http://flickr.com/account/>. To also remove yourself from searches for specific user names, you will need to set your *Flickr profile* to be hidden from searches. **Flickr has finally created a single page with all these settings, this is much easier to do now and is the preferred method - it will shut down all API driven sites.** **(c)** Finally, you can **Banish Yourself From Flickr Hive Mind**. To banish yourself from Flickr Hive Mind, you must first **authenticate to Flickr**, which lets Flickr Hive Mind identify who you are. Once logged in, come back to this area and there will be a link to banish you. If there are any problems email me at nosflickrhivemind ... at ... fiveprime ... dot ... org. (a few people with weird characters in their user names may have had problems)

[Log In To Flickr Now](#)

Flickr Hive Mind is a data mining tool for the [Flickr](#) photography database, allowing search by: tags(keywords); [Flickr](#) photography groups; [Flickr](#) users, their contacts, and favorites; free text; the [Flickr](#) Explore algorithm for interestingness. [Flickr Hive Mind](#) can also be an effective tool to identify photography with licenses that allow non-commercial (and sometimes) commercial use. Written by: [Nathan Siemers](#). Inspired by (and thanks to) [Flickr Leech](#). Dedicated to [Anna](#) and her Flickritis. If you find your login does not work, perhaps your browser has disabled the cookies that I use to track your session. Try telling your browser to accept them. [Flickr Hive Mind](#) stores no personal information nor photos, but some general time and IP address information ends up in my apache server logs. For additional details see the [privacy policy](#). Any revenue generated through advertisement on this site is used only to cover the cost of keeping the site online, beyond that [Fiveprime donates to charitable organizations](#) (also, there are no ads on User pages). [Flickr Hive Mind](#) is currently consuming about **13.6 terabytes** of network bandwidth per year (not including the photos themselves)!



