

WestsideToday

The Green Issue

# Beverly Hills

MARCH 2008

90210

## Architecture Goes Green

Designing with the  
Environment in Mind

**Dutton's to Close April 30**

The Green Issue

WestsideToday

# Santa Monica

MARCH 2008

# SUN

Dutton's to  
Close April 30

## Every Picture Tells a Story

Santa Monica Gallery Features  
Children's Book Illustrations



**Westside**Today

The Green Issue

# Malibu Beach

MARCH 2008

**Dutton's to  
Close April 30**

## **The Future Looks Bright**

**Malibu Foundation Nurtures  
High-Risk Children**



WestsideToday

The Green Issue

# Palisades

MARCH 2008

90272

A photograph of two women standing in a vast field of purple lavender flowers. The woman on the left is wearing a tan top, a straw hat, and sunglasses, with her arms outstretched. The woman on the right is wearing a white long-sleeved shirt with a graphic, a white sun hat, and sunglasses, smiling. The background is a rolling landscape of lavender fields under a clear sky.

## Field of Dreams

Organic Lavender Farmers Take Their Products to the World

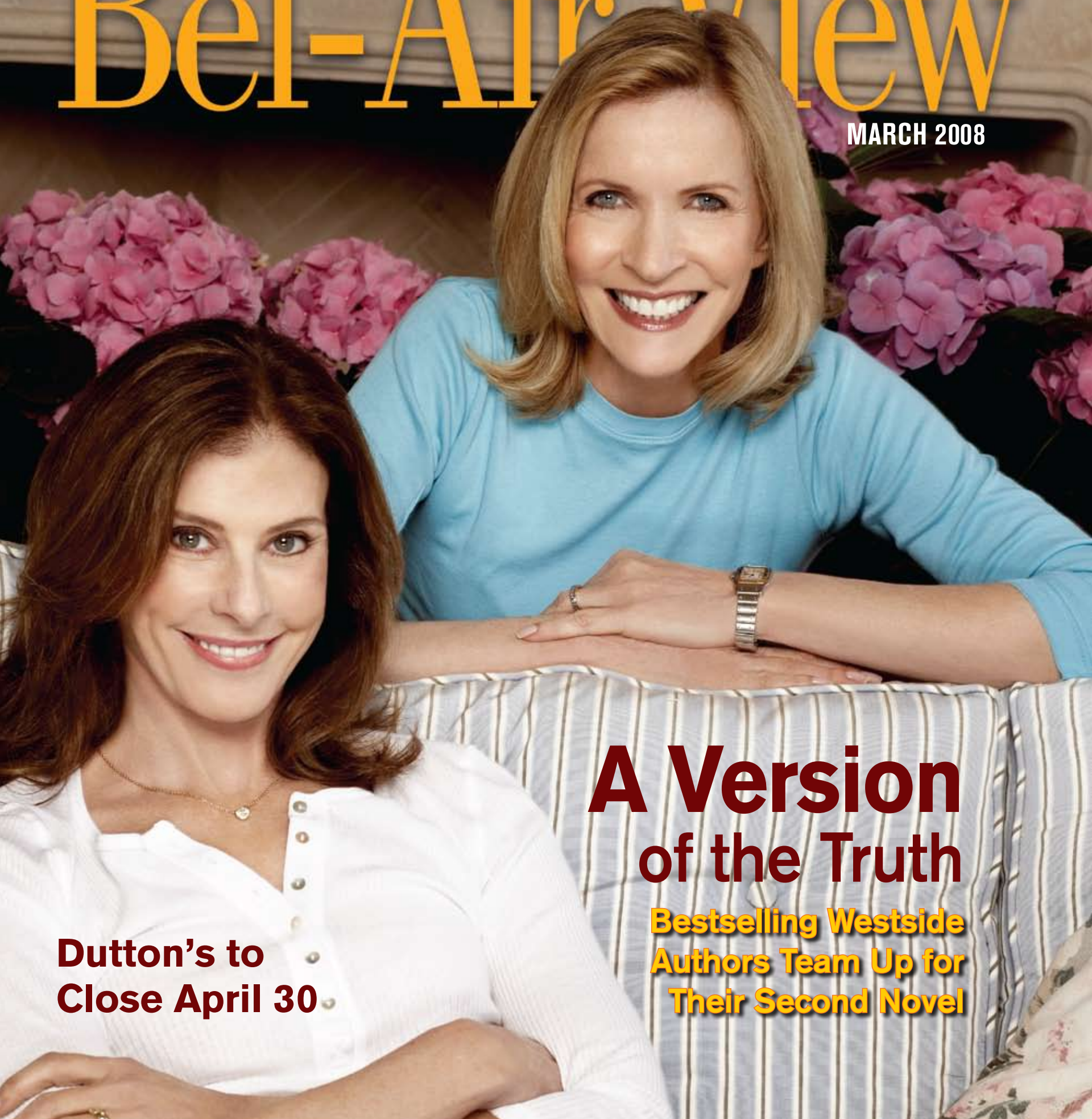
**Dutton's to  
Close April 30**

**Westside**Today

The Green Issue

# Bel-Air View

MARCH 2008



**Dutton's to  
Close April 30**

## **A Version of the Truth**

**Bestselling Westside  
Authors Team Up for  
Their Second Novel**

The Green Issue

Westside Today

MARCH 2008

# Brentwood

## NEWS

**Dutton's to  
Close April 30**

**Ten Years  
with the Getty**

Brentwood's Cultural Gem Continues  
as a Leader in the Arts

